

## PRODUCT CARD

VER. 2.1

**Item name:** CEILING SUSPENDED BASKETBALL TYPE "Y" – SUPPORT STRUCTURE

**Item no:** BB101.11

**Manufacturer:** INTERPLASTIC Roger Żółtowski  
Tuchom, ul. Gdyńska 45; 80-209 Chwaszczyno; Poland  
Tel. +48 58 511 29 60; E-mail: [info@interplastic.pl](mailto:info@interplastic.pl)

**General data:**

**Sample preview:**

**Dead load:** ~400 kg for height of 7,5 m  
(depends on size!)

**Colour:** Standard: WHITE RAL 9010

**Folding:** Front, back or side

**Max. width:** 2600 mm

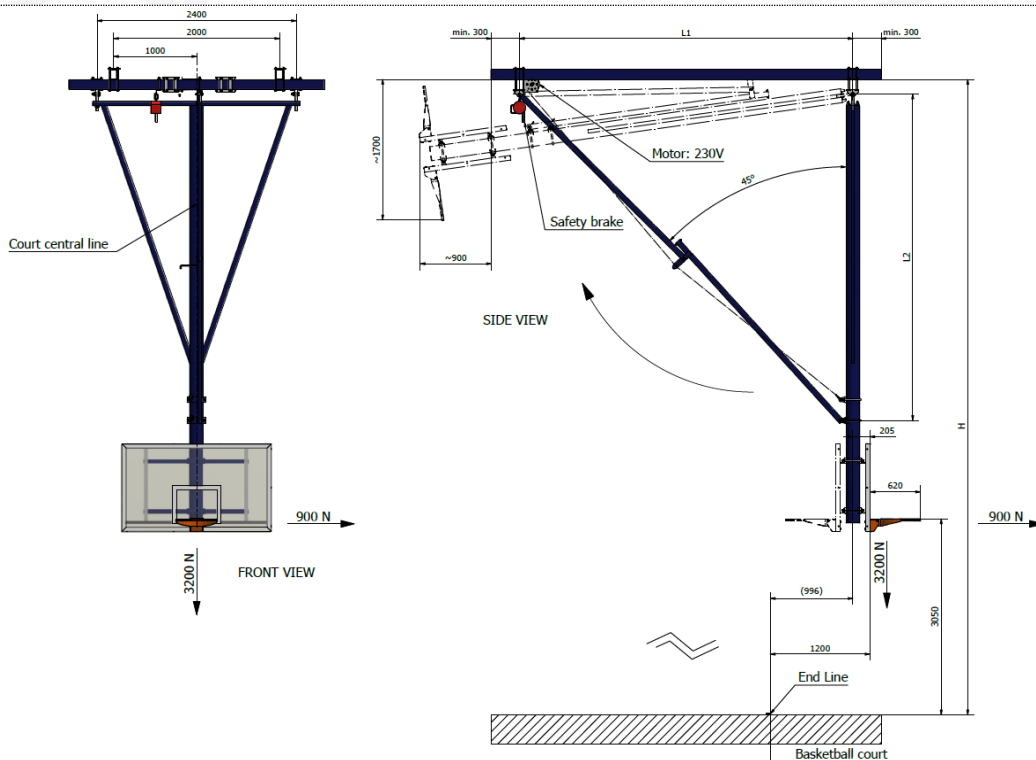
**Min. height:** 6000 mm

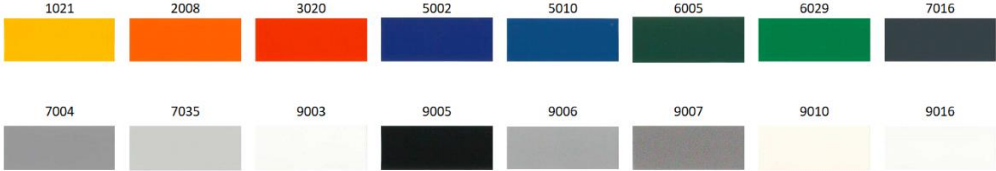
**Max. height:** 9200 mm

**Destination:** Indoor use

**Standard:** EN 1270:2006

**Type/class (EN 1270):** Type 5



|                          |   |                        |
|--------------------------|---|------------------------|
| <b>PRODUCT CARD</b>      |   | Page 2/2               |
| VER. 2.1                 |   | Issue date: 2021-05-04 |
| <b>Item name:</b>        | <u>CEILING SUSPENDED BASKETBALL TYPE "Y" – SUPPORT STRUCTURE</u>  |                        |
| <b>Item no:</b>          | BB101.01.01   |                        |
| <b>Manufacturer:</b>     | INTERPLASTIC Roger Żółtowski<br>Tuchom, ul. Gdyńska 45; 80-209 Chwaszczyno; Poland<br>Tel. +48 58 511 29 60; E-mail: <a href="mailto:info@interplastic.pl">info@interplastic.pl</a>   |                        |
| <b>Description:</b>      | <ul style="list-style-type: none"> <li>designed for sports halls with a height of (FFL-ceiling) between 6 and 10 m</li> <li>depending on building conditions, the structure might require an auxiliary construction made of two 120x80x3 mm beams in the axial distance of min. 200 cm (custom-made depending on the building's conditions)</li> <li>the frame can be folded backward, frontward, and side-ward (the backboard could be turned 360°)</li> <li>the structure is pulled up with the use of a tubular motor (in standard 200 Nm) using a steel wire rope</li> <li>the construction is designed to support tempered glass, acrylic glass, and epoxy resin backboards with the size of 180x105 cm (sold separately)</li> <li>the main centre mast is made of steel tube 168,3x4 mm which provides extraordinary high stiffness</li> <li>the whole structure is protected against corrosion with powder coating (in the standard: RAL 9010, other colours upon request)</li> <li>the ceiling suspended basketball backstop type "Y" is delivered with all necessary assembly elements like bolts, washers, nuts, U-bolts etc. (property class 8.8 or higher)</li> <li>default motor operation: key switch with the deadman's switch function in accordance with DIN 7892:2017</li> <li>in a set with a support beam for the safety device, a motor in a special casing and a custom-made auxiliary structure</li> <li>a safety device, backboards, nets, and padding are sold separately</li> <li>backboards are attached to the main mast with the use of specially designed grips and U-bolts. This solution allows adjusting the height of a backboard easily</li> <li>the construction was tested and certified in accordance to EN 1270:2006 norm (3200 N of vertical force and 900 N of horizontal force).</li> </ul> |                        |
| <b>Colour chart:</b>     | Steel elements of the basketball structures can be powder-coated in the following colours:  |                        |
|                          |   |                        |
| <b>Important notice:</b> | Type, size, and location of the basketball construction and its auxiliary structure are depending on the building's conditions and they must be considered individually each time In order to design and manufacture proper auxiliary structure and basketball constructions, the General Contractor / Purchaser is obliged to provide all necessary cross-sections of the hall including detailed drawings of the roof structure and a floor plan with game lines (preferably in DWG file format)  |                        |